

# AAdd AttachFile User Guide

© Copyright 2000-2017, CopperCAD Design inc.

## Purpose

Used to attach and extract ASCII text files on Allegro BRD files.

## Description

Allegro has the ability to attach small ASCII text files to the Allegro BRD file. This program expands this capability by taking large ASCII files, breaking them up into small chunks and then attaching the multiple smaller chunks to the BRD file. The maximum size for each individual ASCII file that can be attached to the BRD file is 78 Mega Bytes.

## Benefits

Preserve board history, designer comments, tech or Specctra DO files by attaching them to the Allegro BRD file. Reduce the possibility of losing important information by keeping all your critical data in one place.

## Licensed or Un-Licensed ?

This is the first software program issued by CopperCAD Design to run in either Licensed or Un-Licensed mode. In the licensed mode, users launch AAdd\_AttachFile from the AppMan menu as normal. In Un-Licensed mode (where the license has expired or never existed) the program can be launched either by AppMan, command line entry or by alias function key. In the unlicensed mode, when the program is first loaded, a webpage will pop up, advertising other CopperCAD products. The un-licensed mode has the same functionality as the licensed mode without any time limit or usage limit on the software. Good forever on versions 13.6 and up.

## How to Install - Unlicensed (Free) Mode

To install the program, simply save the AAdd\_AttachFile.il and PDF files into your local pcbenv directory. Your local pcbenv directory will be located in the path set by the "HOME" environment variable

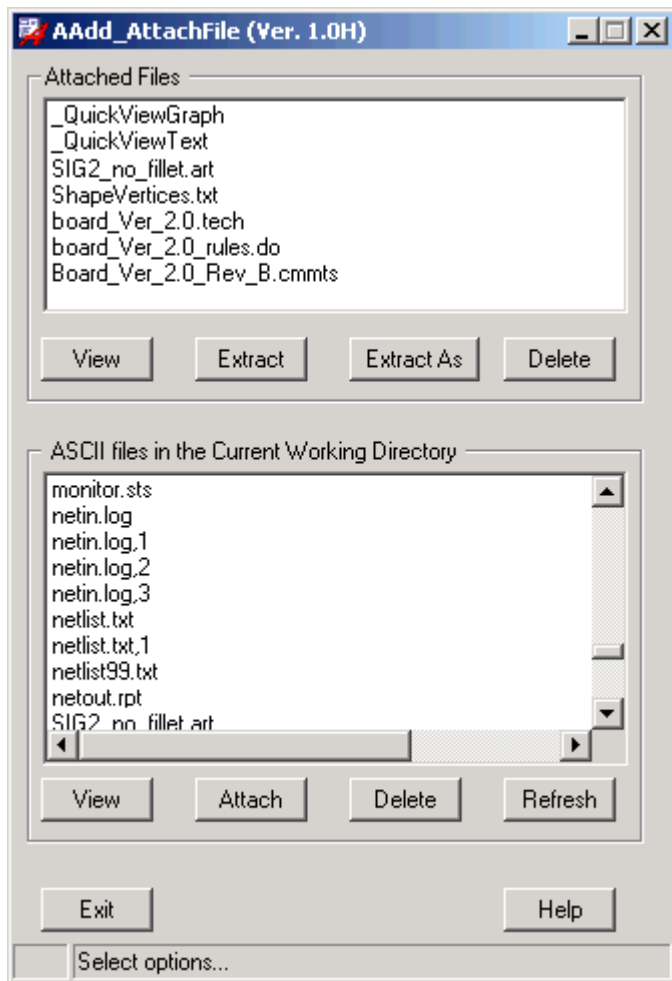
**Define an Alias Key:** Add the following line to the env file, located in your local pcbenv directory, just above the computer generated section.

```
alias ~A AAdd_AttachFile10U
```

Also add the following line to the Allegro.ilinit file, located in your local pcbenv directory. If one does not exist, create one.

```
load("AAdd_AttachFile10U.il" "CopperCAD")
```

---- >>>> To start the program, simply hit "<CTRL> A" <<<<----



## Menu Functions:

### -----Attached Files ----

**View** → Displays the contents of the selected file.

**Extract** → Extracts the selected file to the current working directory. The source file attached to the BRD file remains unchanged.

**Extract As** → Same as function “Extract”, except it allows you to rename the extracted file.

**Delete** → Deletes the selected file that is currently attached to the BRD file.

### ---ASCII Files in the Current Working Directory--

**View** → Displays the contents of the selected file.

**Attach** → Attaches the selected ASCII file to the BRD file.

**Delete** → Deletes the selected file from the current working directory.

**Refresh** → Refreshes the listing view of ASCII files in the current working directory

## Running the Program

### -- Attaching a file --

- 1) Select a file from the lower window listing of the current working directory.
- 2) Click the “Attach” button.—The file will be attached to the BRD file

### -- Extracting a file --

- 1) Select a file from the upper window file list.
- 2) Click the “Extract” button.—The file will be extracted from the BRD file, and placed in the current working directory.

## Program Limits

- The maximum file size that can be attached to the BRD file is 78 Mega bytes.
- No spaces are allowed in the file names, files with spaces are not listed.
- Filenames must be 26 characters or less, otherwise they cannot be attached.
- Binary files cannot be attached to the BRD file.
- Mixed format (ASCII and Binary) cannot be attached to the BRD file.

**Note:** To make Attached file changes permanent, the BRD file must be saved to disk.

For more information, please contact CopperCAD at (905) 488-8958 or [www.CopperCAD.com](http://www.CopperCAD.com)  
 (c) Copyright 2000-2017 All Rights Reserved. CopperCAD Design Inc.