

AAdd RadialGrid User Guide

© Copyright 2000 -2007, CopperCAD Design inc.

Purpose

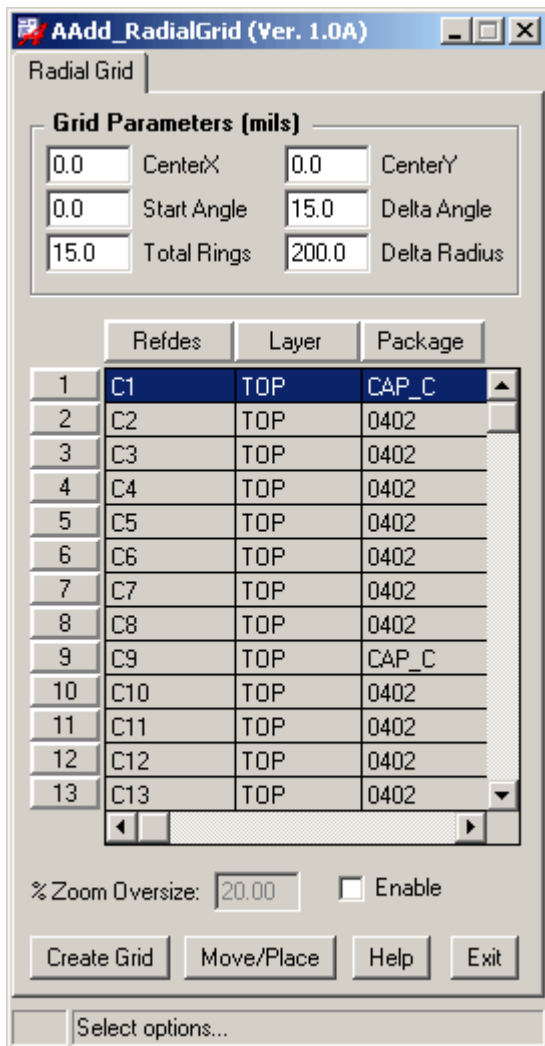
Creates a Radial Component Placement Grid.

Description

Placement and routing of DUT (Device Under Test), Load Cards and Probe Cards is critical. All components and routing must be equal lengths from the center device. Placing these components manually on a radial grid can be time consuming and laborious.

Benefits

Speeds up radial component placement for circular DUT test card.



Menu Functions:

Center X → Specifies the X co-ordinate origin for radial grid

Center Y → Specifies the Y co-ordinate origin for radial grid

Start Angle → Sets the starting angle for the first grid spoke.

Delta Angle → Sets the increment angle for each successive spoke.

Total Rings → Sets the total number of grid rings.

Delta Radius → Specifies the distance between each grid ring.

%Zoom Oversize → When enabled, the Allegro window will zoom to the component location, a percentage larger than the component outline extents.

Create Grid → When clicked, will draw a radial grid using the parameters specified under the Grid Parameters in upper part of the menu.

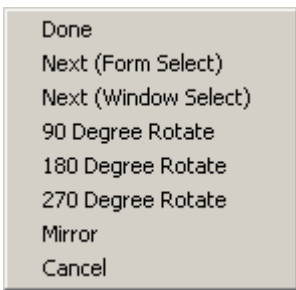
Move/Place → When clicked, will place the highlighted component on the cursor for placement inside the Radial Grid.

Running the Program:

- 1) Set the radial grid parameters.
- 2) Click the **“Create Grid”** button.
- 3) Highlight a component in the menu list.
- 4) Click the **“Move/Place”** button, place the component, and click done.

Note: A positive **Delta Angle** number will create a grid, with the spokes drawn in a counter clockwise sequence.
A negative **Delta Angle** number will create a grid, with the spokes drawn in a clockwise sequence

Right Mouse button Menu



When the component is placed inside the Radial Grid, it will automatically snap to the nearest grid intersection. If the rotation is correct, click the right mouse button and select **“Done”**. Otherwise, select the angle of rotation, and side (mirror) if required.

Note: If you wish to continue selecting components , use the **“Next”** **“Form Select”** or **“Window Select”** option to place multiple components.

Screenshot:

