

# ACopy TestProbe User Guide

© Copyright 2000 -2007, CopperCAD Design inc.

## Purpose

-----

Copies Test Probes from one BRD design file to another.

## Description

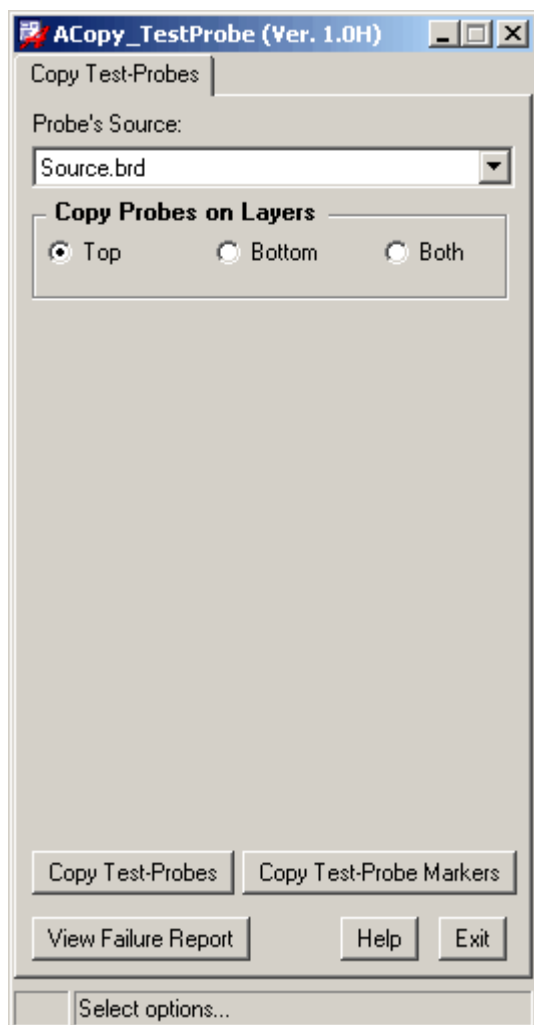
-----

Bed of Nails type test fixtures can cost ten thousand dollars each to produce. By copying the test probe locations from on board to another, the same test fixture can be used on multiple different circuit pack designs, saving the cost of a new fixture on each re-use..

## Benefits

-----

Allows two or more different circuit packs to be tested on the same bed of nails test fixture.



## Menu Functions:

-----

**Probe Source** → Selects the source BRD file. The file must be located in your current working directory.

**Copy Probe On Layers** → Selects the source and destination test probe layers to be copied.

**Copy Test Probes** → Copies the Test Probes from the source BRD file to the current design file.

**Copy Test Probe Markers** → Creates 25 thou square markers to show the source board probe locations (On Layers Ccd\_Probe\_Top/ bottom)

**Failure Report** → Displays a list of TestProbe locations that failed to be copied, due to a missing pin or via at the destination board location.

## Running the Program:

-----

- 1) Select the source BRD file.
- 2) Select the destination layers, **Top**, **Bottom** or **Both**.
- 3) Click the **“Copy Test-Probes”** button.

**Note:** TestProbes will only be copied if **two conditions** are met

- 1) The same TestProbe padstack exists in both design files.
- 2) A pin or via exists at the destination BRD file location.