

AQue_TestProbe User Guide

© Copyright 2000 -2005, CopperCAD Design inc.

Purpose

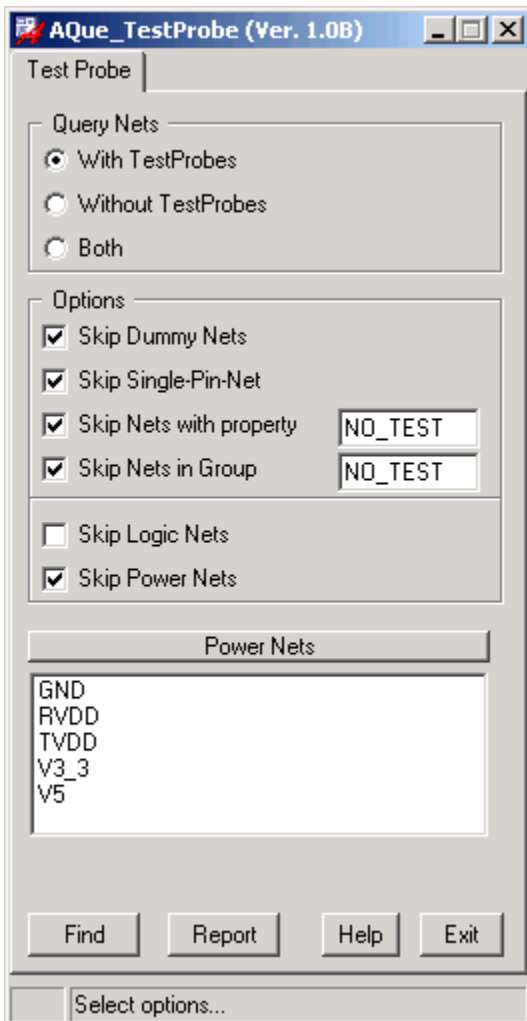
Finds and displays nets with, or without TestProbes, filtered by net type, and by net properties.

Description

AQue_TestProbe can quickly locate nets requiring test probes, filtering out dummy nets, single net pins or nets within the group or having the property No_Test. The targeted nets can be visited one at a time, and pins carrying the net name, in sequence. Alternate TestProbe location can be determined quickly, while ignoring less important nets. This is especially important on congested boards, with less than 100 percent TestProbe coverage. Filtered reports can also be exported for your ATE department, in text or CSV formats.

Benefits

Finds important nets quickly, while filtering out the rest.



Menu Functions:

With TestProbes → Selects target nets with TestProbes.

Without TestProbes → Selects target nets without TestProbes

Both → Selects nets with and without TestProbes.

Skip Dummy Nets → When selected, Dummy nets will not be viewed.

Skip Single Net pins → When selected, single nets pins, other than Dummy nets will not be viewed.

Skip Nets with Property → When selected, nets with the property “No_Test”, will not be viewed.

Skip Nets in Group → When selected, nets in the group “No_Test” will not be viewed.

Skip Logic Nets → When selected, all logic nets will not be viewed,

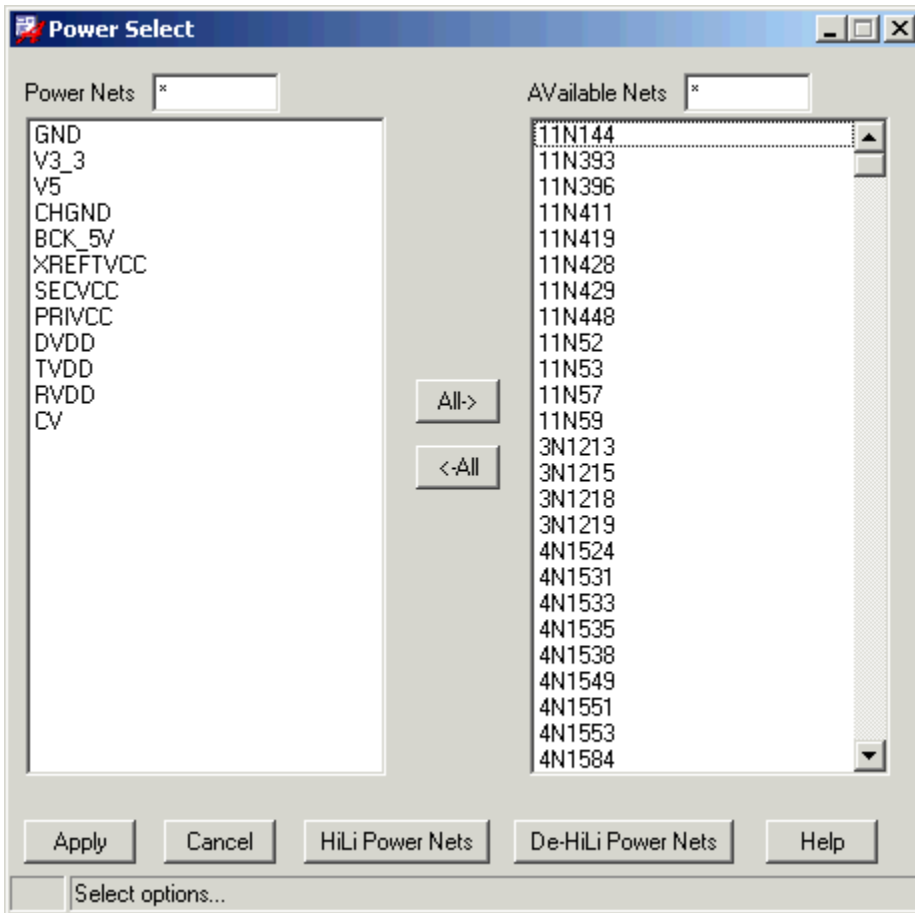
Skip Power Nets → When selected, all power nets will not be viewed.

Power Nets → Used to define design power nets.

Find → When clicked, pops up a net viewer window.

Report → Displays a text report for nets with and without TestProbes, for the selected options.

Power Net Selection Menu



Power Nets → Power Nets are populated automatically at start-up by sorting nets that are identified as power nets and by collecting nets attached to all shapes on all layers.

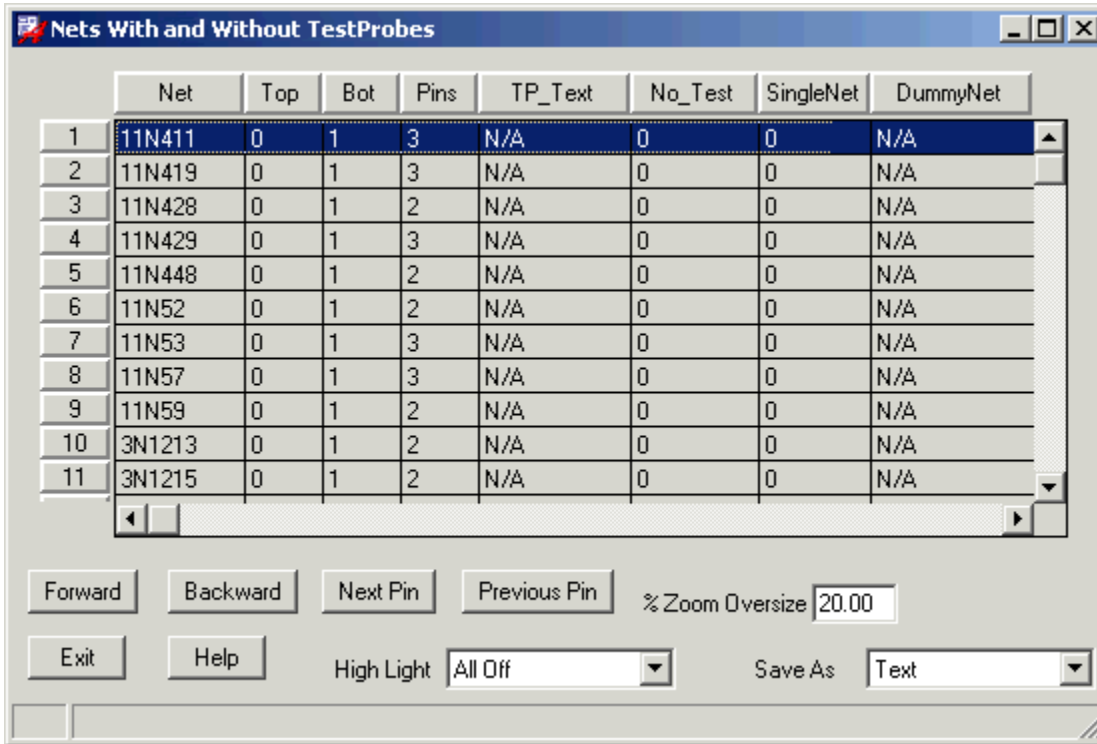
HiLi and De-HiLi → Selected power nets can be highlighted and de-highlighted using these two buttons.

Note: Double wildcards can be used in the selection filter. eg. “* GND* ”

Running the Program:

- 1) Select nets with or without TestPobes, or both
- 2) Select the net types or groups to be skipped.
- 3) Select to skip logic or power nets, or view both
- 4) Edit the power net list if required. Normally this list self populates.
- 5) Click “Report”, to view a text report for the selected options.
- 6) Click “Find” to view and visit nets for the selected options.

AQue_TestProbe Report Viewer



Navigate to individual location simply by clicking on any line.

The “**Forward**” and “**Back**” buttons allow easy sequential navigation of the objects.

The “**% Zoom Oversize**” allows you to customize the size of window view based on the object size.

Right click on any of the columns headings to **re-sort** the data.

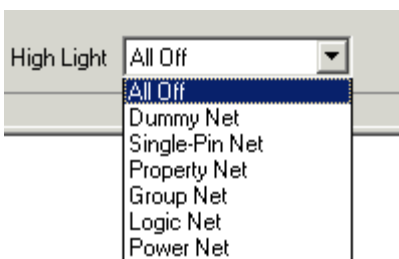
Next Pin and **Previous Pin** can be used to visit individual pins for the currently selected net.

Save As Text or CSV file formats will create report files in your current working directory.

AQue_TestProbe_ReportTxt.txt or **AQue_TestProbe_ReportCsv.csv**

These reports may be useful for your ATE test department, especially when less than 100 percent of the boards nets nodes will have test pins.

HighLight



Simply click and select the **High Light** button to highlight groups of nets, by net type, within the design.

All off turns the highlighting off.

Column Data Types

Net → Net name.

Top → Number of TestProbes on the Top layer.

Bot → Number of TestProbes on the Bottom layer.

Pins → Number of pins for the net node.

TP_Text → TestProbes text identifier. If text is not present then N/A.

No_Test → One (1) or zero (0) to indicate if net has the property “No_Test”.

Single Net → One (1) or zero (0) to indicate if net is a single net pin.

Dummy Net → Dummy nets are identified by RefDes and pin number. eg. U97.21
If the net is not a dummy net, then N/A.

Text and CSV Reports

Both Text CSV format reports can be imported into Excel, however if any of the designs net names start with a plus sign, the symbol will be lost. To preserve plus signs, use the **“DATA → Import External Data”** function and indicate that the data format is **“Text”** when prompted.

